

A photograph of a modern building with a glass facade. The building is partially obscured by a dark, out-of-focus foreground element, possibly a person's head or shoulder, which is reflected in the glass. The sky is a pale, hazy blue. The overall mood is architectural and contemplative.

Delugan
Meissl
Associated
Architects

Interior Design

Projects

Residential	05	House Ray 1	Vienna, Austria
	20	TS 11	Vienna, Austria
	28	H.O.M.E House	2021
	37	House RT	Austria
	45	House B	Austria
	53	Villa M	Germany
	61	Apartment Oberlech	Oberlech, Austria
	66	CI17	Austria
	73	Casa Invisibile	Slovenia
	83	'Helmut Eder' Men	Tyrol, Austria
Retail	87	'Helmut Eder' Woman	Tyrol, Austria
	90	Hyundai Design Studio	Seoul, Korea
	97	Sparkasse	Bremen, Germany
Office & Mixed Use	104	Touristinfo	Vienna, Austria
	112	Clinic Deschamps-Braly	San Francisco, USA
Office Profil	118	Office Profil	

House Ray 1 Vienna, Austria



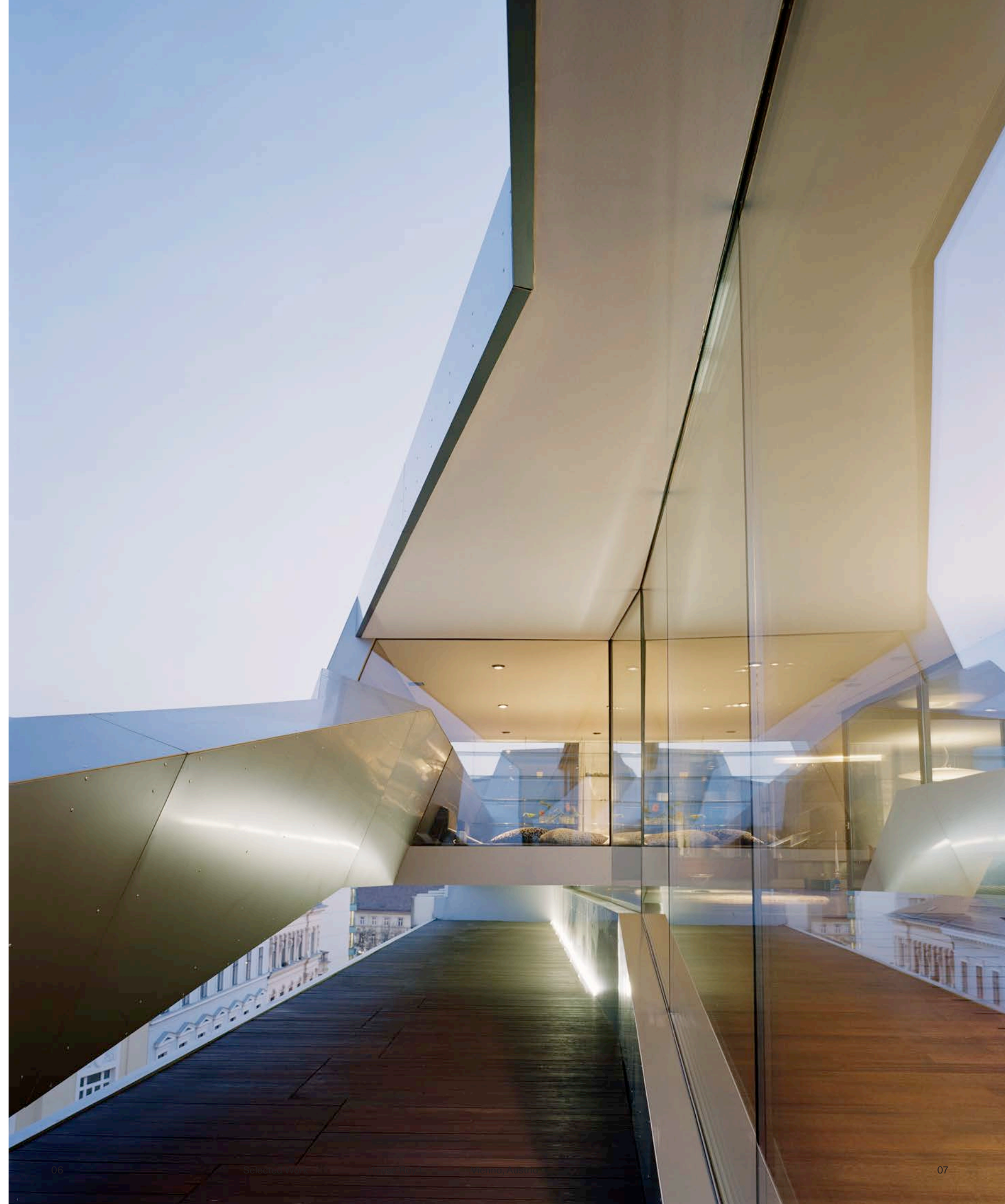
House Ray 1

Vienna, Austria



Situated on the flat roof of a 1960s office building in the middle of the rooftop landscape of Vienna's fourth district, Ray 1 evolved out of the direct stimuli and spatial quality of the location. This origin, however, is by no means contradicted by the clash of the static mass and the dynamic form of architecture in motion; this juxtaposition rather serves to charge the structure. The new building evolved out of the connection between the two buildings on either side, continuing the line of projection of the gables and providing, as it were, the missing link. The boundary between sky and earth, however, should not be taken as a dividing line separating the roof and the surrounding context, but as a permeable border zone that itself becomes a space for living. Recesses and folds create transparent zones and sheltered terraced

landscapes on both sides of the building, providing opportunities for experiencing the structure's open layout, from the entrance all the way up to the accessible roof area. The outer skin, which is coated with Alucobond, defines the contours of the apartment's interior, suggesting varying valences for different zones and niches. The intention was to create a shell that would function as a programmable medium for furniture; one would be transformed through the architecture. The interior space is designed as a loft whose various functional areas are defined by different floor levels.



CATEGORY
Residential
Interior Design

ADDRESS
Mittersteig 10
A-1050 Vienna

START OF PLANNING
2000

START OF CONSTRUCTION
11/2001

COMPLETION
11/2002 [excl. furniture]
06/2003 [incl. furniture]

FLOOR AREA
230 m²

BUILT-UP AREA / SITE AREA (FLAT ROOF)
340 m²

STRUCTURAL ENGINEERING
Werkraum ZT GmbH Vienna, Austria

AWARDS
2003 Polydecor-Corian Design Award, 1st prize
2003 Nominated to the Mies van der Rohe

AWARD
2004 Deutscher Umbaupreis, 1st prize

PHOTOGRAPHER
Hertha Hurnaus
Peter Rigaud
Rupert Steiner





House F Slovenia



Embedded in a gentle hilly landscape, the house complements an existing ensemble. The adopted building configuration, with its open angles and two intersecting saddle roofs, reflects the distinctive character of the site. Completely closed towards the street, the generously glazed interior with its central living and dining area opens up to the impressive natural landscape. The spatial transition continues smoothly through a terrace laid out on several levels with a partially sheltered front area.

Each room offers a variety of visual connections internally as well as to the surrounding nature. Inside, the intersection of the roof as well as the overall height of the rooms is tangible. Tall the chosen materials, white walls and polished screed are restrained and thus emphasize the particular geometry of the house.

The outer skin of the constructive timber frame building consists of a wooden lamella facade, which is drawn over the saddle roof and due to the chosen bar depth gives the facade a plastic, as well as from different perspectives a changing appearance.

The spatial transition continues smoothly through a terrace laid out on several levels with a partially sheltered front area.









TS 11
Vienna, Austria

TS 11

Vienna, Austria

CATEGORY
Residential
Interior Design

ADDRESS
Vienna

START OF PLANNING
05/2010

START OF CONSTRUCTION
06/2011

COMPLETION
05/2013

FLOOR AREA
200 m²

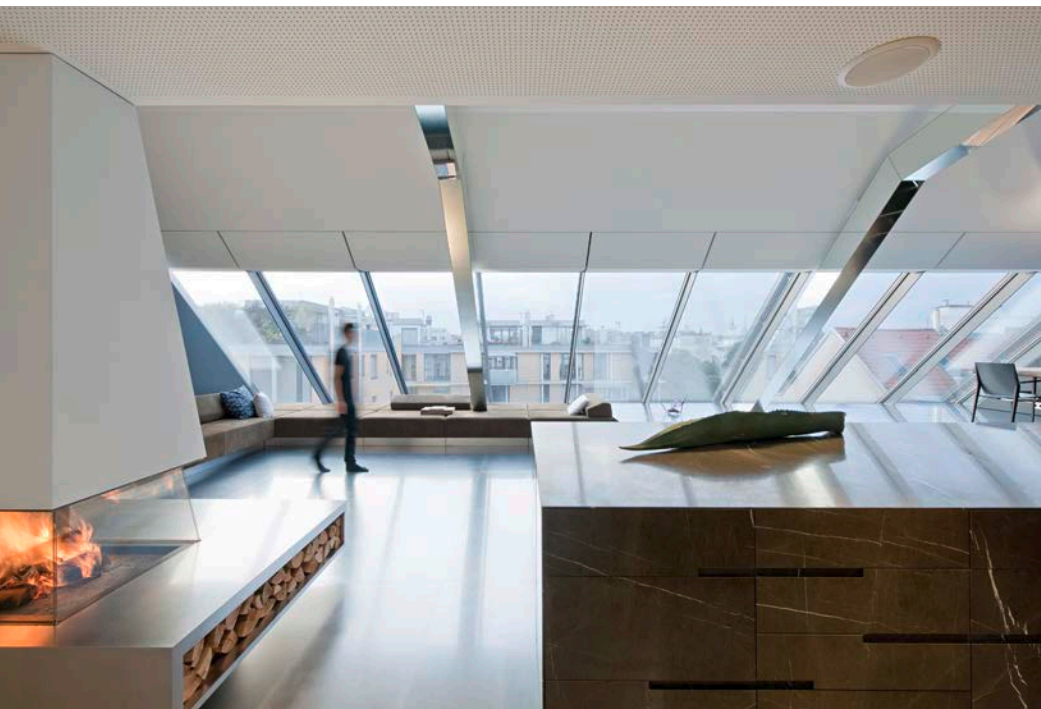
GROSS SURFACE AREA
255 m²

CONSTRUCTION VOLUME
900 m³

TERRACE
120 m²

PHOTOGRAPHER
Hertha Hurnaus





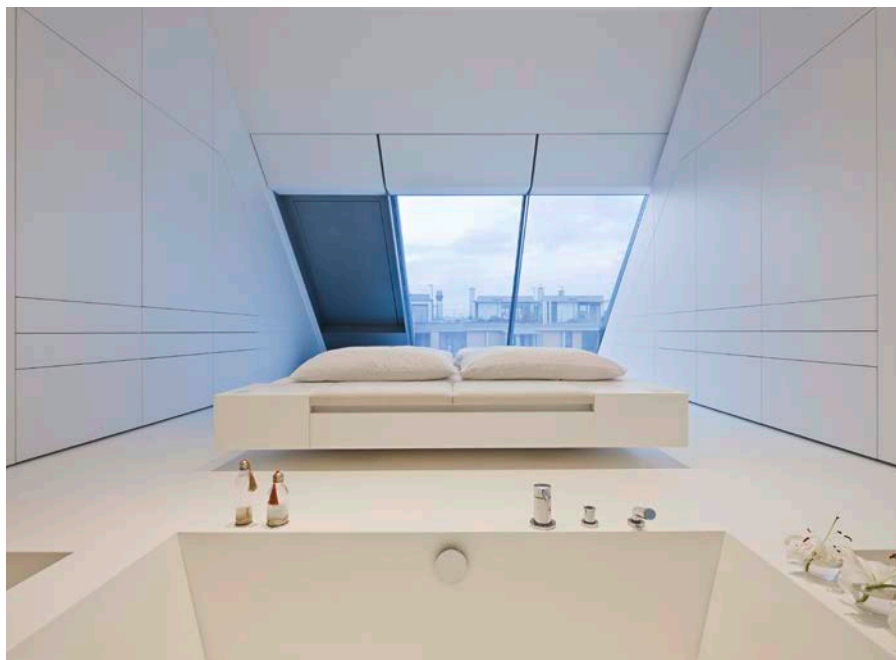
TS11 represents the architectural approach of flowing spatial transitions, the borders between the interior and the exterior are extensively dissolved, whereupon the architectural concept stands in a balanced relation with the surroundings.

Generous glazing creates manifold visual relations, different moods of the lighting generate differentiated perceptions of space, the occupant becomes a part of the urban fabric, the urban fabric a part of the interior. The consciously chosen monochromatic material concept, as well as the intentionally set accents of the particular furnishings – such as the monolithic kitchen element made of black stone

and the individually configurable set of shelves – intensify the ever-changing spatial experience.

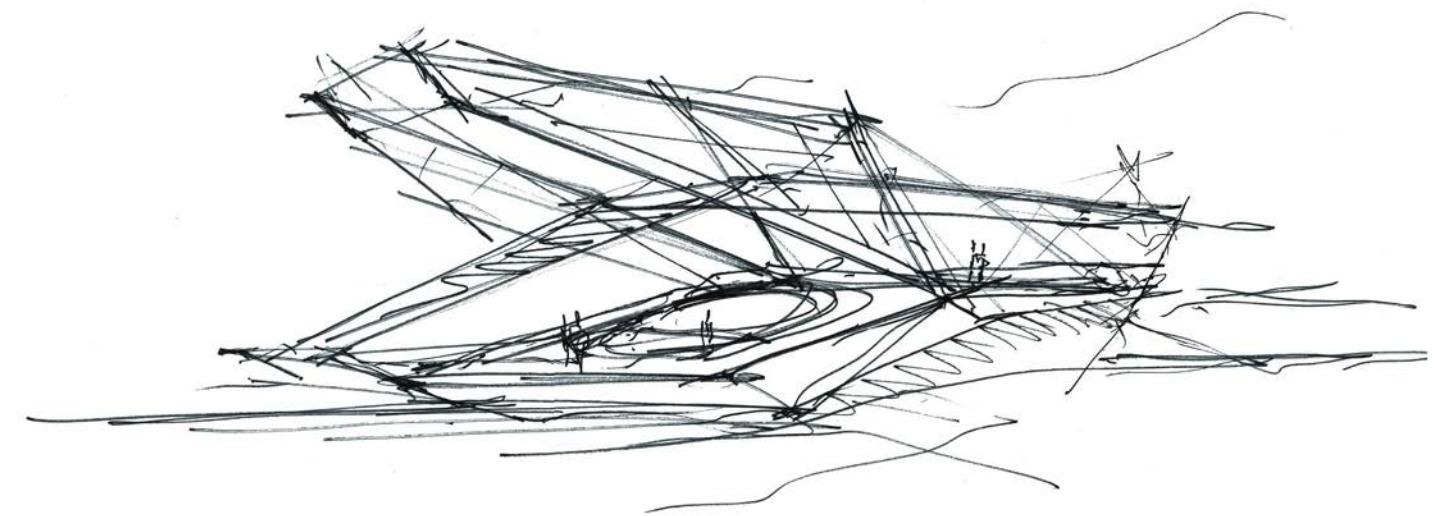
Different levels articulate the entire living area, which in proportion always correspond to an optimum seat height, so as to allow for a flexible usage. The white bedroom with an integrated bathroom area conveys the feeling of calmness and relaxation. The spacious southern-oriented terrace is divided into different functional areas thanks to vertically offset areas, a water basin, as well as insular green spaces.





H.O.M.E House 2021





CATEGORY
Residential
Interior Design
Landscape Design

CLIENT
H.O.M.E. Magazine

GROSS FLOOR AREA
198,14 m²

GROSS FLOOR AREA
outdoor / landscape
303,40 m²

CONSTRUCTION VOLUME
1909,10 m³

LANDSCAPE VOLUME
733,40 m³

HEIGHT
7,50 m

NUMBER OF LEVELS
2

NUMBER OF BASEMENTS
1

LANDSCAPE ARCHITECTS
ManMadeLand

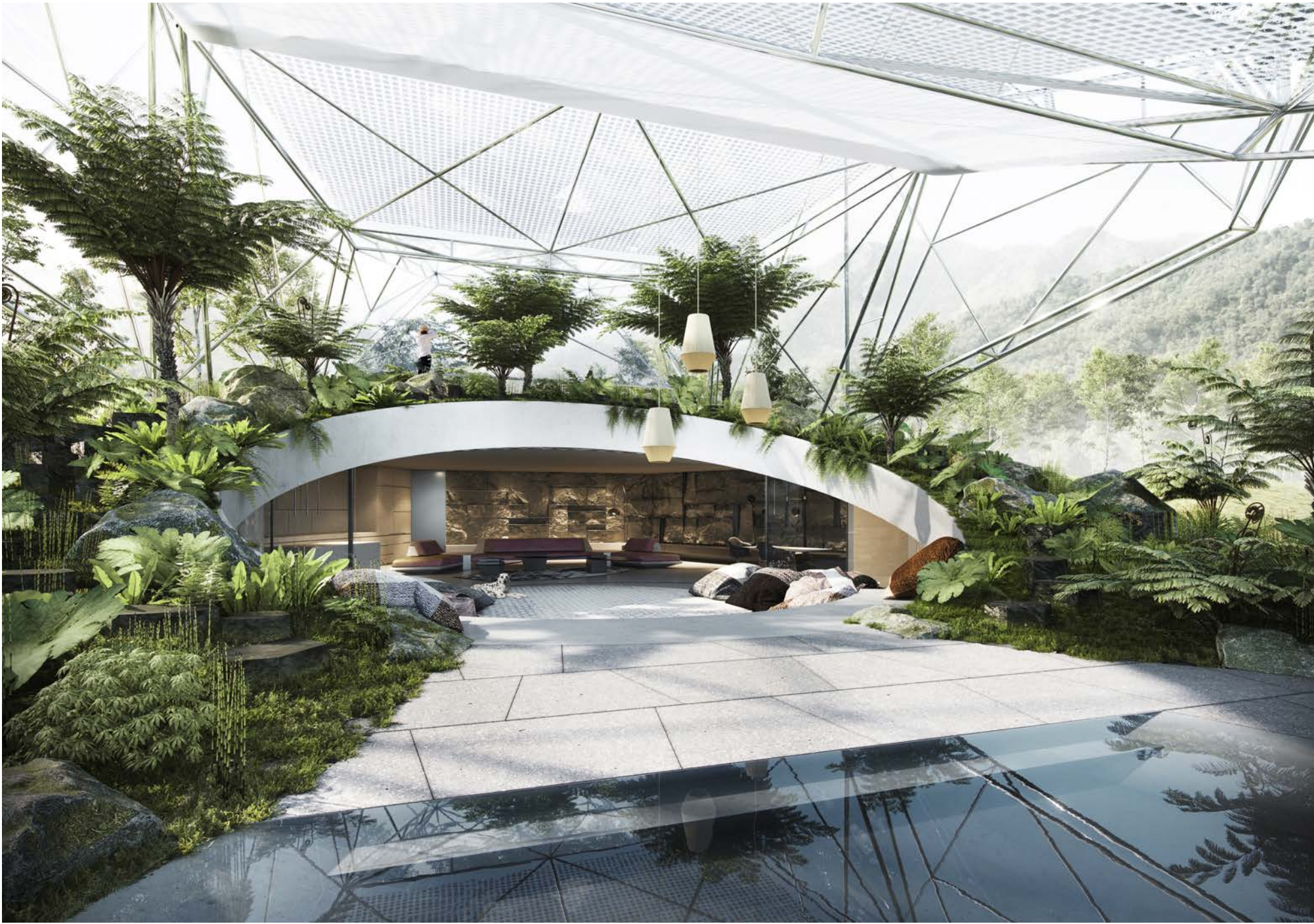
STRUCTURAL ENGINEERING
B+G Ingenieure
Bollinger und Grohmann ZT GmbH

BUILDING PHYSICS
Transsolar
Energietechnik GmbH

VISUALIZATION
Toni Nachev

H.O.M.E House 2021

DMAA used the invitation to develop the so-called H.O.M.E. House 2021 as an opportunity to investigate a series of subjects that have come to the fore in recent years at the scale of the detached home. Against this background, the concept also addresses the question of whether and in which form this type of building is still appropriate today. From the starting point of an architectural-historical examination of the subject, an initial glance at the design reveals that the interface between nature and architecture has become a central motif of the project and that this has impacted upon the spatial composition in a number of ways.





The house sees itself as an organic component of the surrounding landscape, which is reflected in the interior and ‘roots’ the prototype in its locality. In contrast with the functional approach of the traditional winter garden, the domesticated nature below the expanded climatic envelope of the house is directly connected with the massive, covered part of the living space and can be used all year round without any extra heating or cooling. The solution, which is based on the historical example of the farmhouse, combines low overall energy demand with user-oriented temperatures and a natural spatial climate.

The approach to the house, which is cut into the landscape, shapes the pedestrian access and leads visitors straight into the central living area, from where stairs lead to lower-lying bedroom, bathroom and ancillary spaces. This central living space opens generously onto an intermediate area within the transparent membrane roof construction, which sits upon a massive and topographically differentiated base and contains a pool, a further bedroom and bathroom area, and living spaces. These zones can be accessed via two stairs that form part of the house’s own natural landscape. The boundary between inside and out, which, throughout the history of architecture, has often played

a clear and orchestrated role, becomes the hybrid zone of a flexibly usable environment, in which furniture, space and nature merge together in line with a broader understanding of the interior and contribute to a highly dynamic, complex residential atmosphere.

The principle that underpins the design seeks to optimally reinforce the spatial relationships and those between “house and garden”. This principle can also be transferred to other projects such as subsidised housing and is a good example of the way in which architecture can offer more than a mere preoccupation with space and form. The relationship between nature and architecture is currently being renegotiated. Our house makes a concrete contribution to this process.



House RT
Austria

House RT Austria

CATEGORY
Residential
Interior Design

ADDRESS
Austria

START OF PLANNING
11/2003

START OF CONSTRUCTION
09/2004

COMPLETION
08/2005

FLOOR AREA
554 m²

SITE AREA
2,791 m²

BUILT-UP AREA
668 m²

TERRACE
200 m²

PHOTOGRAPHER
Hertha Hurnaus

The site's characteristic and gently shaped topography was the starting point for the design. The slope on the skirts of the forest overlooking the nearby city opens up to a wide panoramic view over the valley and the surrounding mountain landscape. The architectural response was a residence with maximum relation to nature in the middle of a glade. Based on the house's atrium-like typology, the systematically positioned intervals between landscape and construction achieve lively relationships between the artificial and the natural. Circumferential folds and large-scale glass openings in the walls absorb, reflect, underline and complement the scenic parameters. The house's reclusive position and integration with the mature natural overgrowth gives it the character of an open refuge which is introverted, yet at the same time wide open. Following the topology, the interiors are aligned with the highly amenable outdoor spaces, thus creating clearly defined, spatially permeable areas free of barriers and fluidly connected. The crack pattern on the façade underlines the tension between surface feeling and color. It can either be rich in contrast in the snowy winter landscape or complementary to the surrounding forest's summery colour interplay.







House B Austria



House B Austria

The design of the Igls Residence seeks to achieve the perfect balance between a representative appearance, a sense of scale, the contextual reality and an intimate spatial configuration.

The concept and the positioning of the house emerge from the qualities of the setting. The building opens generously towards Viller Moor, while shielding itself from the Camino de Santiago and the neighbouring gardens in order to maximise the sense of privacy.

The central living space is organised on a number of levels that step down towards Viller Moor in such a way that optimal views are enjoyed from every part.

The basic architectural layout is programmed in line with the needs of the client and will be refined and adapted through a process of intense dialogue.

The required functions are organised horizontally and connected vertically by penetrating lightwells that act as points of orientation while also drawing natural light deep into the building. The central atrium greets visitors at the main entrance and separates the living areas from the guest wing.

At the upper level, the children's and play area is arranged around a generous covered courtyard.

The first basement is home to the garage and the wine cellar. A further atrium provides natural lighting to the cinema and part of this wine cellar. The third vertical penetrating element is generated by the external pool, which manifests itself in the spa in the form of a glazed volume and draws differentiated atmospheric sequences of light into the interior space.







Villa M Germany





Villy M
Germany



Recently, the refurbishment of a three-story villa from the late 19th century was completed. After several conversions over the past decades, the building is now once again used as a residential home – in accordance with its original purpose. The historic exterior façade is listed as part of an ensemble with the neighboring buildings and was restored in close accordance with monument protection. In the process, the conservatory was also renovated in line with the original design.

The north facade, oriented towards the garden on the courtyard side, was deconstructed and restored in a modern form. Wooden slats, projecting alcoves and balconies characterize the new visual appearance. The roof was rebuilt in the established geometry using generous glazing onto the roof garden, which was created as an attractive outdoor space by recessing the roof space. A staircase was added to provide access to the garden from the ground floor level.

Upon entering the house through the historic entryway, the imposing open staircase immediately draws attention. High exposed concrete walls, intriguing light installations, and a full raw steel railing introduce the industrial look that was consistently implemented throughout the house. Elegant floor-to-ceiling steel loft doors emphasize the characteristic original heights of the ceilings, which were retained after the existing building was largely gutted.

The use of tactile exposed concrete surfaces and warm wood floors emphasizes the loft-like industrial character on the ground floor as well, where individual rooms have been combined to create a spacious living and dining area with kitchen. Floor-to-ceiling glass windows, fronted by generous outdoor spaces, draw the greenery of the garden indoors.





Apartment Oberlech
Oberlech, Austria

Apartment Oberlech, Austria

Delugan Meissl Associated Architects were contracted to develop the interior design of a holiday flat on the basis of an existing plan in the traditional and glamorous alpine skiing resort of Lech, Austria. The very narrow ground plot is home to the residential unit spread over three storeys. The design reflects the user's needs for peace and quiet, privacy and relaxation in order to properly finish off a strenuous day on the slopes in a fitting atmosphere. The interior is decorated in warm earthy colours which successfully creates a comfortable and snug feeling. They also serve to underline the

contrast to the white, cold environment outside. There are no harsh borders between individual rooms but instead they flow into each other seamlessly. The entrance is on the upper storey, on which level you will also find the bedrooms. The individual room-sized berths determine the furnishings one piece appearance. The lower floor houses the living quarters. A generously sized fireplace opens up a sweeping and extensive relaxation area. The materials for the sauna, steam bath and rest areas in the basement were also chosen with the utmost care.

CATEGORY
Residential
Interior Design

ADDRESS
Oberlech
Austria

START OF PLANNING
03/2004

START OF CONSTRUCTION
07/2006

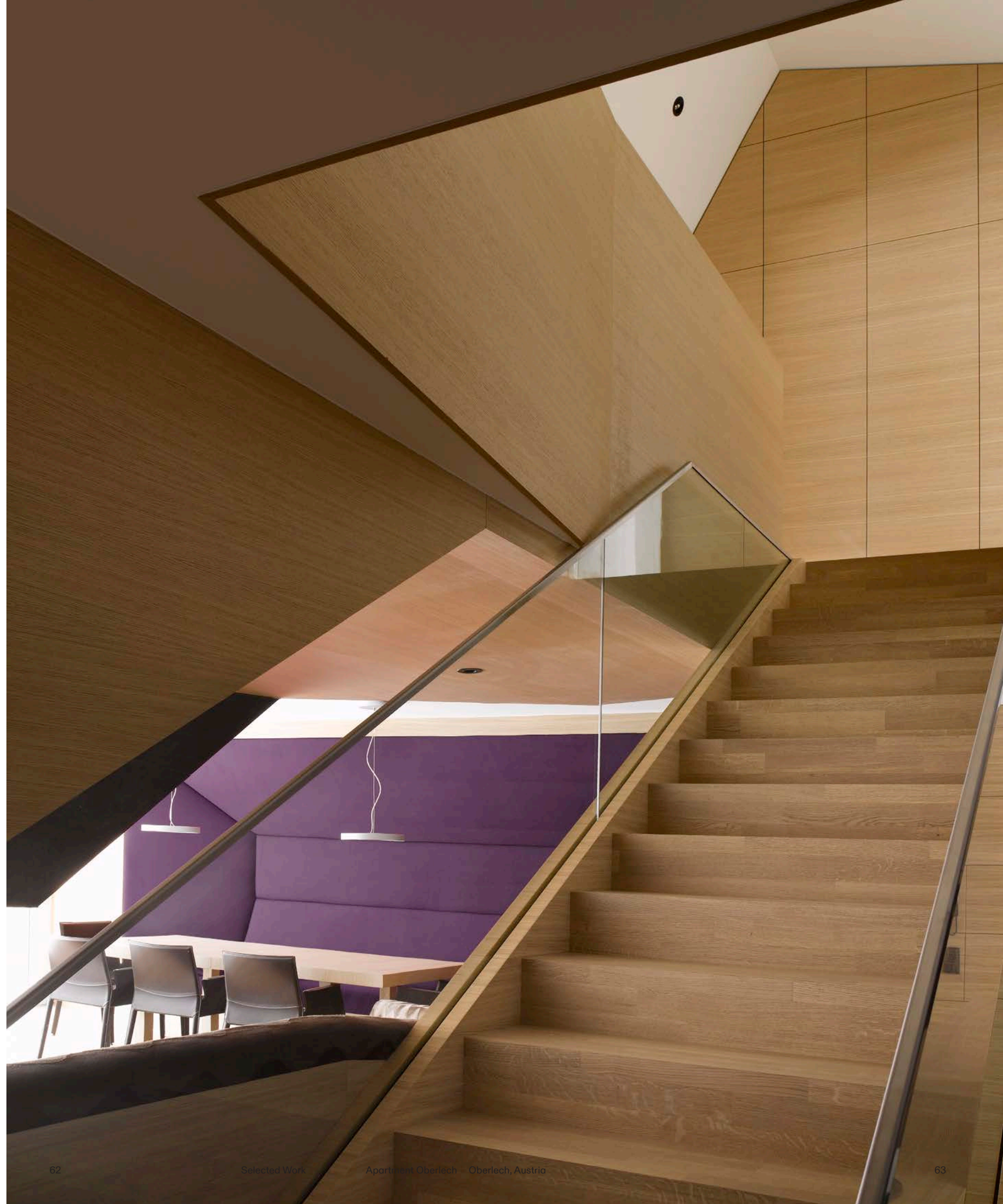
COMPLETION
12/2006

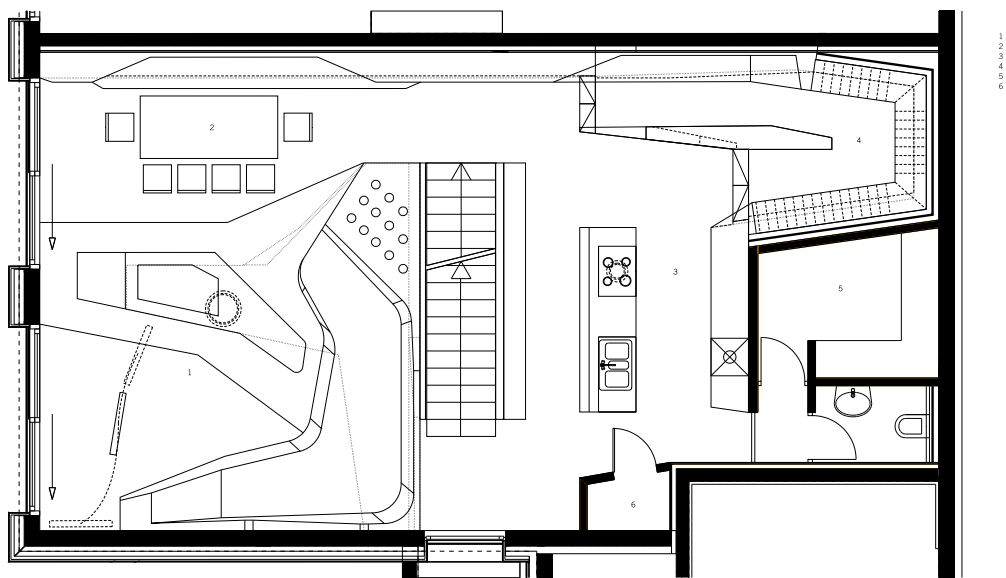
FLOOR AREA
258 m²

VOLUME
680 m³

CLIENT
Private
Execution of construction work
Atlantis Architektur Bau GmbH
Mäder, Austria

PHOTOGRAPHER
Adolf Bereuter





CI17
Austria



CI17 Austria

CATEGORY
Residential
Interior Design

ADDRESS
Austria

START OF PLANNING
2005

START OF CONSTRUCTION
01/2008

COMPLETION
04/2009

FLOOR SPACE
220 m²

GROSS FLOOR SPACE
230 m²

CONSTRUCTION VOLUME
678 m³

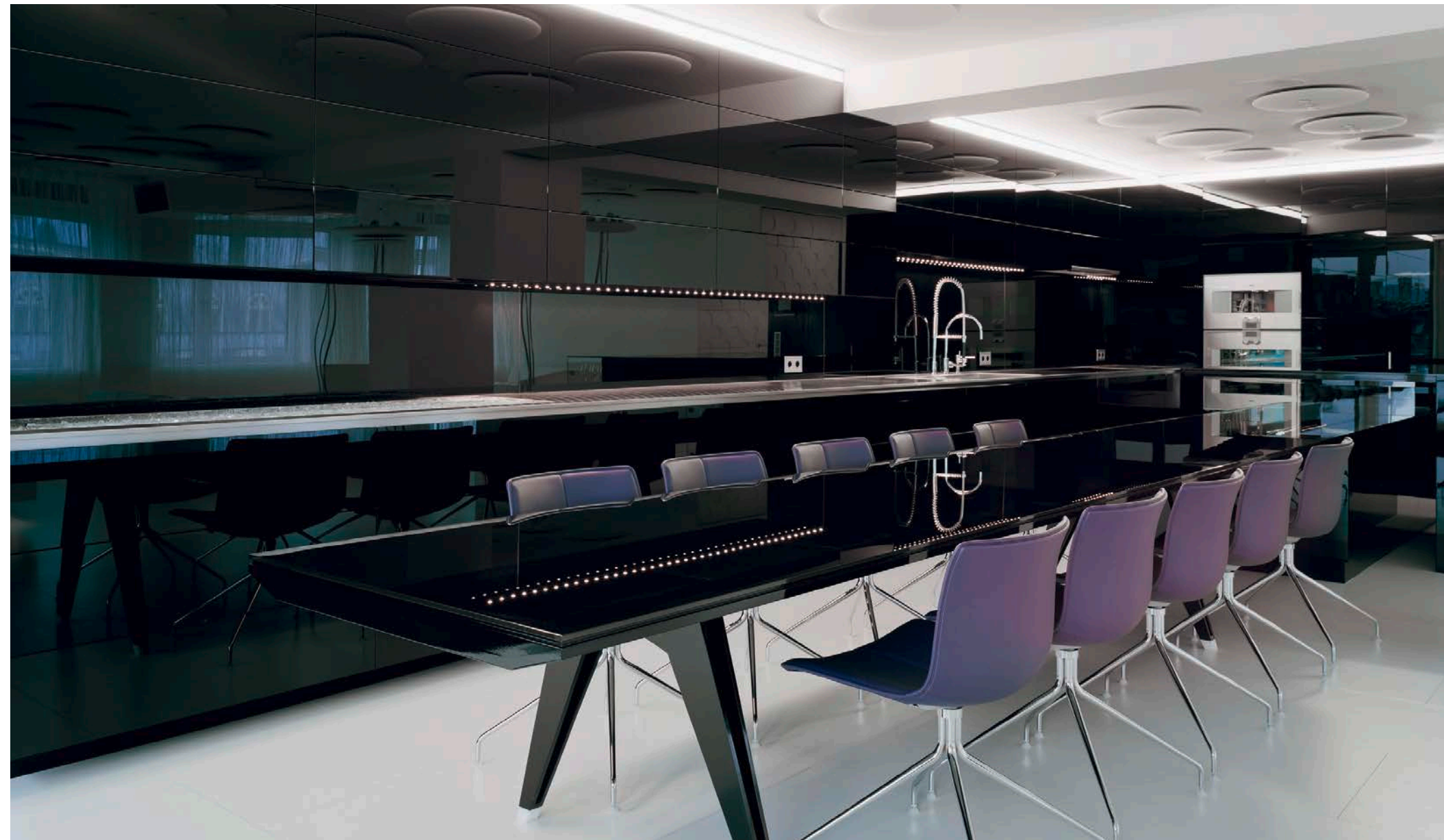
PHOTOGRAPHER
Brigida González
Herta Hurnaus

In a combined residential and office building from the 1960s, the interior design intervention manifests itself as a cocoon-like plug-in: without negating the existing structure, the “artificial” interior of the residential floor merges with the surrounding reality through its views of the characteristic surrounding historical buildings and the towers of the neighbouring inner city landscape. The clear and symmetrical sequence of rooms brings materiality and surface qualities into the focus of attention. This also gives the totality of the project a unique structure and a specific climate: gleaming, reflecting, opaque and transparent elements of space define the interior’s character as a multi-medium through their appealing interplay.



The space is dominated by the colour white, while programmable multi-coloured lights, accompany visual colour projections to illuminate the space and also reveal the differentiated materiality. Integrated provisions for functional or decorative use offer additional options for individual ambiance design: gentle coves, backlit, quiver-like dents in the furniture surfaces, fixtures for the provided floral design. White walls, determining the space, run through the open floor plan and thereby surround an interposed space box comprising two rooms. Its surface shows the visual effects of the colour and light ambiance controls, thereby giving the room an abstract and vivid structure. The space box of two rooms defines the symmetry of the open layout in a living area with integrated dining and kitchen areas, as well as a relaxation and bedroom area with an adjacent open bathroom.

Individual functional areas gain a clear allocation through their material properties in the light of day: transparency and cast shadows, reflecting and opaque elements structure the interior into clearly defined areas, which intertwine seamlessly. At night, the oscillation of light and multimedia effects gains dominance and provides an atmosphere of varying ambiance and colours: if desired, the living space is washed and flooded by changing light and sound effects, homogenising multimedia effects lift material barriers, horizontal and vertical elements of construction are soaked by visual and auditory atmospheres as equal elements of space. The architecture thus yields to sensual effects, the high degree of abstraction of the experimental intervention manifests itself in its entirety.



Casa Invisibile Slovenia



Casa Invisible Slovenia

CATEGORY
Residential
Interior Design

ADDRESS
Slovenia

START OF PLANNING
02/2013

START OF CONSTRUCTION
05/2013

COMPLETION
07/2013

GROSS FLOOR AREA
50 m²

NET FLOOR AREA
45 m²

CONSTRUCTION VOLUME
160 m³

PHOTOGRAPHER
Christian Brandstätter

Casa Invisible is a flexible housing unit, which consists of a prefabricated wood structure designed for turnkey implementation at any designated site. Maximum flexibility and spatial quality are the key elements in its concept of development. The open layout is structured by a chimney and a wet cell creating three spatial units that provide for individual use and design. The structure and ambience of the rooms are characterised by the use of domestic woods. The mounting framework and fittings of the housing unit are exclusively assembled from prefabricated elements at the factory. The overall dimensions are 14.50 x 3.50 meters, which provides for easy transportation by lorry. Design and texture of the interior design and façade can be determined by the client from various options listed in a design catalogue.

This provides for tailor-made design options for the housing units as well as for flexible pricing options. Through modular element construction and the intensive use of wood, the housing units can be completely disassembled which minimizes their environmental footprint. By combining innovation and mobility at a reasonable price, Casa Invisible is a product that offers a ground breaking alternative in an increasingly critical housing situation. Key factors in this unique proposition are its uncomplicated assembly, its attractive price and the free choice of location. Compared to the cost-intensive and bureaucratic construction of a conventional house, Casa Invisible offers a literally ground breaking alternative.











'Helmut Eder' Men
Tyrol, Austria

Men's Fashion Shop 'Helmut Eder' Tyrol, Austria

CATEGORY

Retail
Interior Design

ADDRESS

Sterzinger Platz 3
A-6370 Kitzbühel
Tyrol, Austria

START OF PLANNING

12/2006

COMPLETION

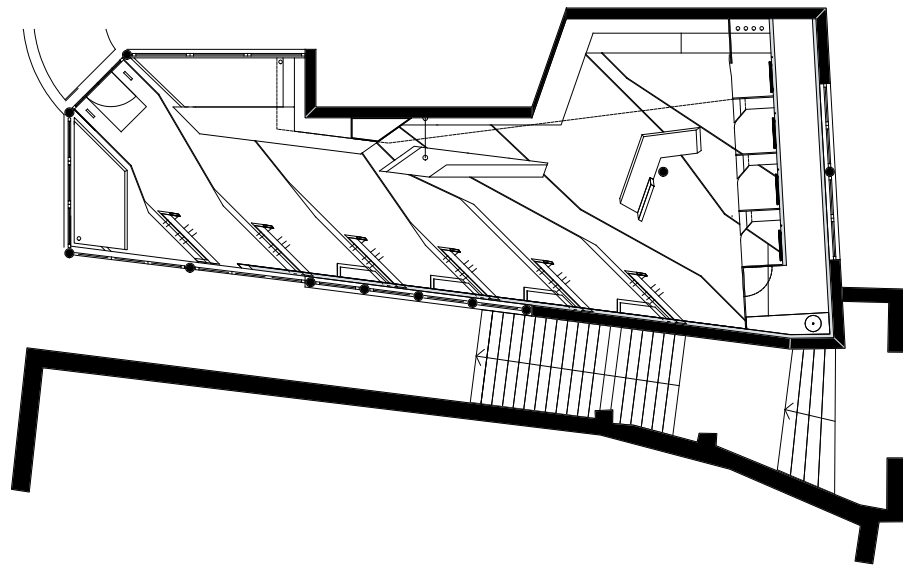
08/2007

FLOOR AREA

258 m²

CLIENT

Helmut Eder Mode GmbH



Each of the two exclusive fashion shop concepts situated in Kitzbühel's historic pedestrian quarter relates in its own way to the existing spatial parameters of the retail spaces. Whereas the interiors of the Eder Women's Store have been designed in explicit contrast to the medieval vaults by means of single furniture elements made of bog oak, the concept for the men's store constitutes a formal and material unit. All its spatial elements like walls, shelves, stands and counters, rise homogeneously from the solid oak floor. Flush parallel metal strips run through the floor, carrying forward along the wall and continuing as hanging devices for items on display.

This graphic and functional orientation is carried through in the concepts for ceiling and lighting. The furniture elements in the ladies' boutique appear as a functional unit and self-contained module. Their design and material form a clear contrast to the existing construction. All technical fixtures and required functional elements have been integrated into the furnishings.



'Helmut Eder' Woman Tyrol, Austria



Woman's Fashion Shop 'Helmut Eder' Tyrol, Austria

CATEGORY
Retail
Interior Design

ADDRESS
Bichlstrasse 5
6370 Tyrol, Austria

START OF PLANNING
03/2008

COMPLETION
06/2008

FLOOR AREA
116 m²

MATERIALS
SHELF ELEMENTS
bog oak; medium
density fibreboard – high glossy lacquered,
cream white

CLIENT
Helmut Eder Mode GmbH
Sterzinger Platz 3
A-6370 Kitzbühel

PHOTOGRAPHER
Foto Lazzari
Kitzbühel
Tyrol, Austria



Each of the two exclusive fashion shop concepts situated in Kitzbühel's historic pedestrian quarter relates in its own way to the existing spatial parameters of the retail spaces. Whereas the interiors of the Eder Women's Store have been designed in explicit contrast to the medieval vaults by means of single furniture elements made of bog oak, the concept for the men's store constitutes a formal and material unit. All its spatial elements like walls, shelves, stands and counters, rise homogeneously from the solid oak floor. Flush parallel metal strips run through the floor, carrying forward along the wall and continuing as hanging devices for items

on display. This graphic and functional orientation is carried through in the concepts for ceiling and lighting. The furniture elements in the ladies' boutique appear as a functional unit and self-contained module. Their design and material form a clear contrast to the existing construction. All technical fixtures and required functional elements have been integrated into the furnishings.



Hyundai Design Studio Seoul, Korea



Hyundai Advanced Design Studio Seoul, Korea

CATEGORY
Office
Interior Design

ADDRESS
231, Yangjae-dong, Seocho-gu,
Seoul 137-938, Korea

COMPETITION
2011 (1st prize)

START OF PLANNING
06/2011

START OF CONSTRUCTION
09/2011

COMPLETION
05/2012

FLOOR AREA
693 m²

GROSS FLOOR AREA
693 m²

CONSTRUCTION VOLUME
2.772 m³

NUMBER OF LEVELS
1

CLIENT:
Hyundai Motor Company
Seoul, Korea

AWARDING BODY
INNOCEAN

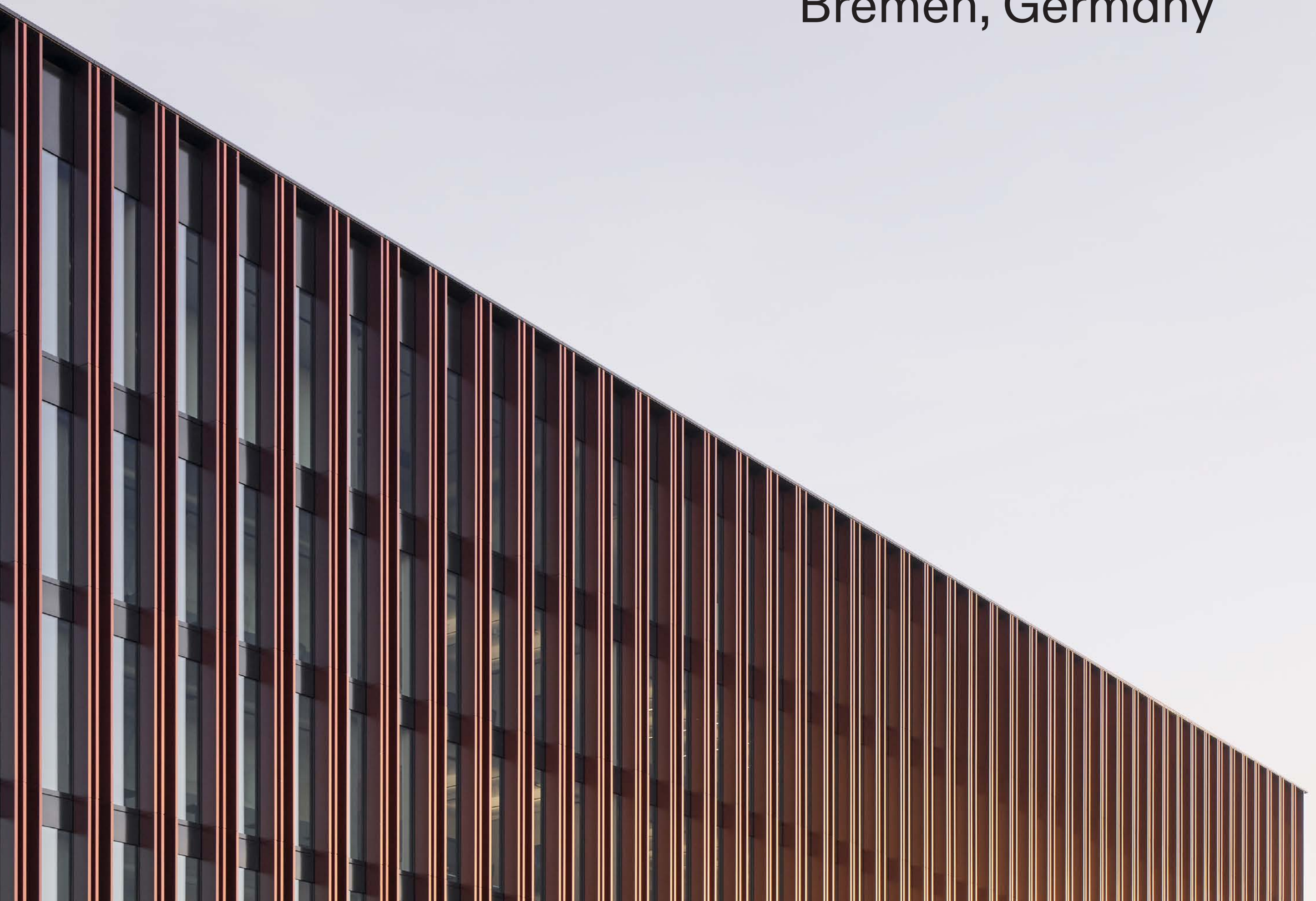
Central requirements for the Hyundai Advanced Design Studio consist in creating an open and clearly structured space, highly capable of stimulating the creative workflow and communication between several working areas and uses. The main design idea aims to avoid a monotonous and faceless open plan office without any means of identification and to convey Hyundai's core identity features: caring, simplicity and creativity. The main goal of the concept for the Hyundai Advanced Design Studio is to provide a clearly recognisable allocation for the variety of requested working areas, constantly preserving overviews and visual connections between related functional areas. Besides, the spatial concept follows the permanent correlation between openness and privacy, between communication and concentration, supporting the flow of working processes and ideas.





A sequence of individual, connected areas characterises the Design Studio as a homogeneous and clearly segmented functional space entity. The zoning of the total surface is achieved by implementing an artificial “landscape” into the existing space, composed of graded platforms combined with a modeled ceiling. Interconnected zones of different levels and heights provide an exciting topography of functional areas, each of a clearly recognisable, different character and atmosphere. Accesses and space levels establish a coherent orientation within the studio. The positioning of grades and ramps does not only follow the optimisation of the internal workflow, but also creates shortcuts, in order to shorten the distance of individual movements between all functional areas. Monochrome white color and the homogeneous materiality create a neutral space, emphasising the visibility and presentation of the creative, colorful output of this department.

Sparkasse Bremen, Germany



Sparkasse Bremen, Germany



DMAA’s design for the new headquarters of Sparkasse Bremen emerged from an invited competition for the development of a site, which is close to Bremen University – at the junction between Universitätsallee and the motorway access road – and offered few clues to designers regarding the shaping of the urban context and the building morphology.

The seemingly reserved, standalone building volume defines the location through the inviting gesture of its transparent base, which opens to its surroundings on three sides in the form of full-height glazing. The building makes a major contribution to the improvement of the adjacent open spaces as well as becoming an urban meeting place in itself, thanks to its publically accessible restaurant. In addition to the bank’s reception, which is found in the generous lobby, the connecting 400 m2 Startup Centre injects additional energy into the ground floor of the building.

By consciously stepping back from the neighbouring streetfronts, a large forecourt is created in front of the main entrance on Universitätsallee, which combines with the transparent base to form a welcoming gesture that draws customers into the building. Upon entering, they enjoy views into the generously planted interior courtyard, around which the flexibly divisible offices are arranged on three standard floors, while the stepping back of the lower and upper floors creates small open areas and balconies. In addition to the employee terrace at first floor level, the green flat roof of the parking garage provides further areas for break times and recreation, while also rounding off the wide range of attractions that are available to employees and include a sport and fitness zone.

- CATEGORY
Office
Interior Design
- ADDRESS
Universitätsallee
Bremen
- COMPETITION
2018 (1st prize)
- START OF CONSTRUCTION
11/2018
- COMPLETION
09/2020
- FLOOR AREA
15.000 m²
- GROSS SURFACE AREA
22.300 m²
- CONSTRUCTION VOLUME
91.700 m³
- SITE AREA
7.172,75 m²
- BUILT-UP AREA
4.697 m²
- HEIGHT
approx. 23m
- NUMBER OF LEVELS
5
- NUMBER OF BASEMENTS
1
- PHOTOGRAPHER
Piet Niemann





Around half of the available office space can be booked by employees on a time basis and is laid out in flexibly divisible cellular spaces that surround two service cores containing tea kitchens and WC's and are complemented by a number of smaller spaces for individual retreat as well as by meeting rooms of varying sizes. By combining all of the above with the possibility of zonal air conditioning, glare-free daylight and modular furnishing, the project represents the successful realisation of a highly contemporary office building that responds to the complex requirements for spatial flexibility and user comfort with a reservedly simple yet extremely precise and high-quality spatial solution that enhances the health and comfort of customers, employees and visitors alike.

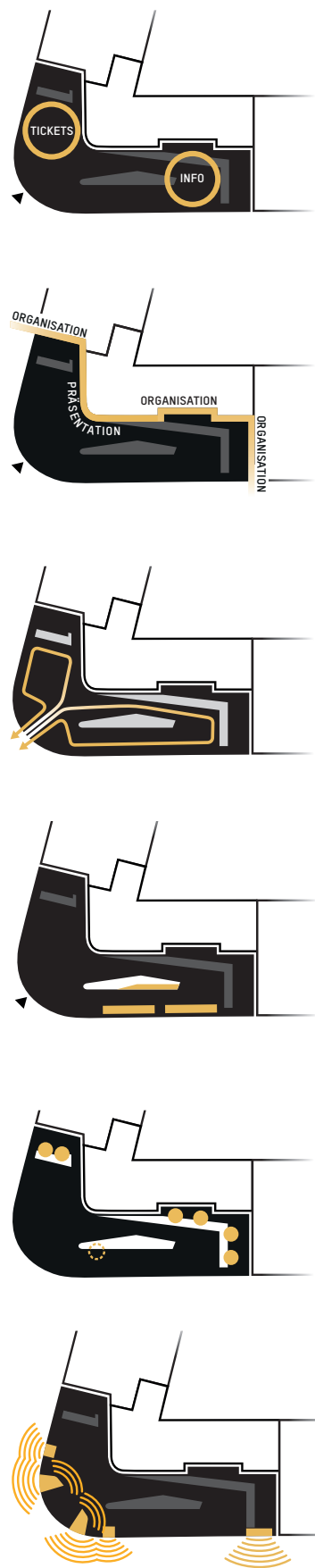
The four upper levels of the building are enveloped by 40cm deep vertical slats. As well as providing highly efficient solar protection, these contribute to the harmoniously elegant overall appearance of the building, whose colour scheme, which is based on the bricks that are widely used in the vicinity, enables it to merge into the surroundings with self-conscious understatement.





Touristinfo
Vienna, Austria

Touristinfo Vienna, Austria



CATEGORY
Office
Interior Design

ADDRESS
Albertinaplatz
1010 Vienna

COMPETITION
11/2013 [1st prize]

START OF PLANNING
01/2014

START OF CONSTRUCTION
07/2014

COMPLETION
11/2014

CLIENT
Vienna Tourist Board

PHOTOGRAPHER
Herta Hurnaus



The design of the new Tourist Info follows the architectural approach of spatial experience, as well as the interaction between architecture and its perception. The optimum connection between functional and aesthetic qualities is the focal point of the design, ensuring smooth work flow as well as a fascinating high-quality space.

A faceted space shaping brass wall is in the heart of the concept, representing Vienna’s diversity through its multifunctional quality, materiality and appearance.

The choice of materials, furniture and a balanced colour scheme create a distinctive atmosphere and strengthen the presence of this modular information medium. The space is divided into two functional areas, hanging lights serve at the same time as a signage system, a lounge area and other seating furniture offer a possibility to linger. The new Tourist Info gives Vienna’s visitors a first strong idea of the historically charged and unique city.

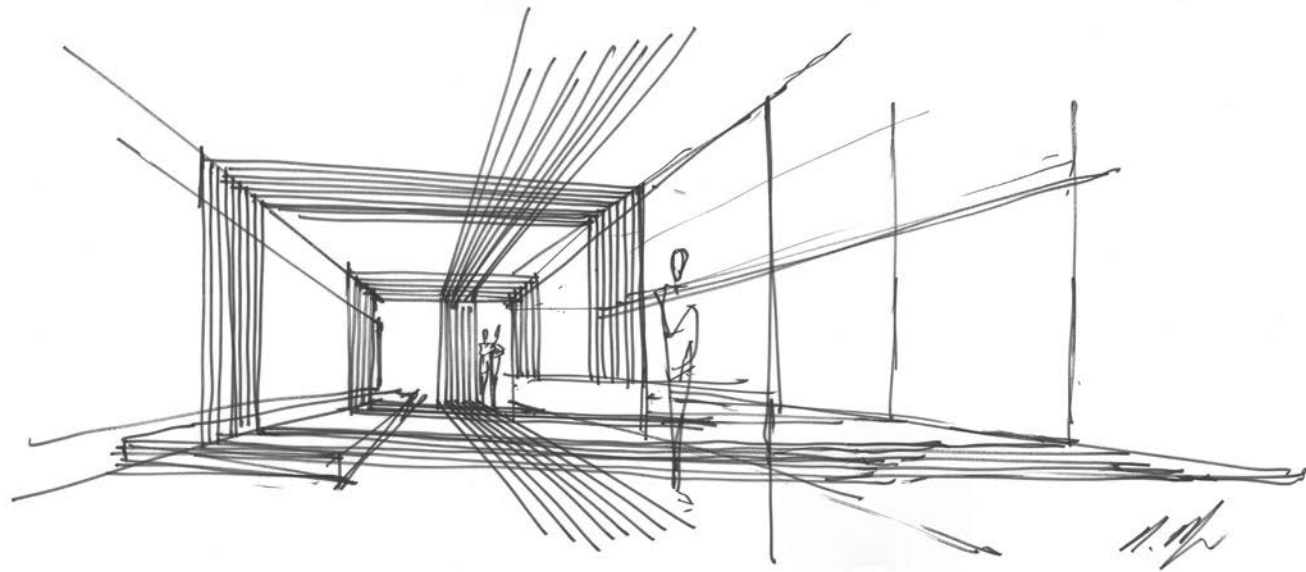




Clinic Deschamps-Braly San Francisco, USA



Clinic Deschamps-Braly San Francisco, USA



The possibilities of modern medicine are extensive and utterly fascinating. At the same time, it is more important than ever that medical progress is accompanied by an appropriate ethical approach. An outstanding illustration of both these factors is the work of the San Francisco-based plastic and cranio-facial surgeon Dr. Jordan Deschamps-Braly. Dr. Deschamps-Braly belongs to a very small group of surgeons, who specialize in facial gender confirmation surgery for transgender people. Patients from around the world seek his help in harmonizing their outward appearance with their inner feelings.

In 2016, he contacted DMAA to discuss the design of a project for a new office in the famous Tiffany Building in downtown San Francisco that would use the means of architecture and interior design to embody both his professional perfectionism and his complete commitment to providing maximum care and comfort to his patients. He visited Vienna to present his extraordinary work and project ideas immediately began to flow. It soon became clear that the design should reflect Dr. Deschamps-Braly's meticulous, microscopic surgical technique while also creating a calm and relaxing atmosphere.

Central to the concept is a system of linear timber elements – lamellas – that cover the floor, walls, and ceiling. These define the main axis from the front door to the end of the hall while transverse lines in the floor mark the entrance to each office and the ceiling lamellas turn downwards to provide a filter to the glazed interior walls. This allows light to penetrate deep into the hall while offering patients the privacy that they expect in such an environment. With their various directions, layers, and spatial planes, these lamellas create the effect of a protective cocoon.

Careful consideration was given to the selection and the performance of the various elements and materials, which work together to create a sensitive and attractive space that has little to do with the classic notion of a sterile clinical environment. The contrasting combination of the warm and welcoming tones of the timber elements, the intimate dark shades of the natural stone flooring, and the acoustic fabric ceiling panels, achieves the perfect balance.

CATEGORY
Interior Design

ADDRESS
360 Post Street, San Francisco, USA

START OF PLANNING
04/2017

START OF CONSTRUCTION
01/2019

COMPLETION
07/2019

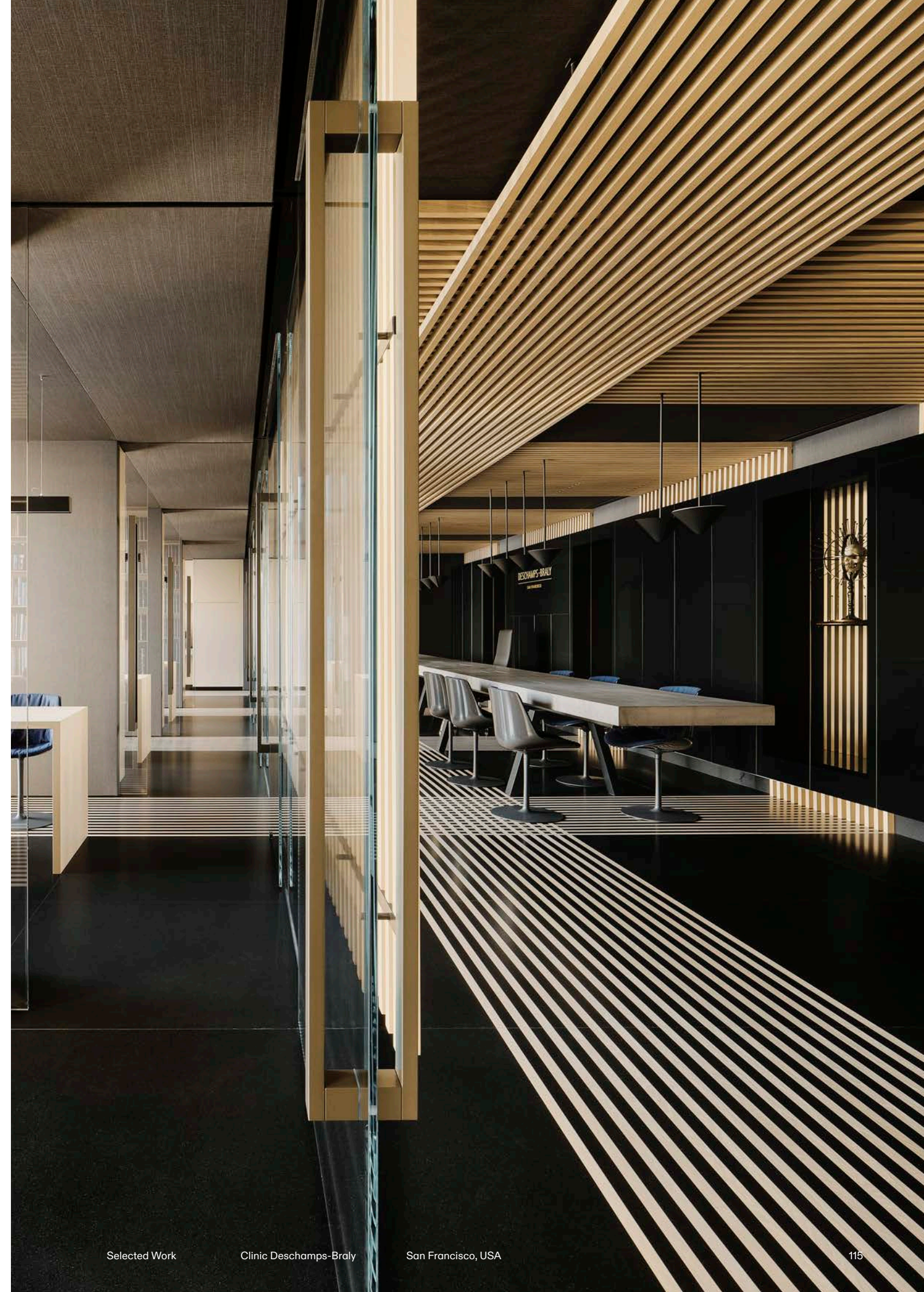
FLOOR AREA
200 m²

CONSTRUCTION VOLUME
515 m³

CONSULTANTS

CARPENTER
Cserni Objekt GmbH

PHOTOGRAPHER
Joe Fletcher
Leandro Farina







Delugan Meissl Associated Architects (DMAA) is an international architecture office based in Vienna, Austria. DMAA addresses the social and ecological issues of today, in defiance of routine responses and with a passionate and relentless focus on the new and the unconventional. Our vision: We create spaces that meet the individual, social and cultural needs of people in their regional context. With our passion and our love for experimentation, combined with our complete professionalism, we have spent many years developing surprising and versatile high-quality architectural solutions. These are

exemplified by flagship projects as the EYE Filmmuseum in Amsterdam, the Porsche Museum in Stuttgart and the Festspielhaus Erl.

DMAA was founded in 1993 by Elke Delugan-Meissl and Roman Delugan. They have run the office together with Dietmar Feistel and Martin Josst since 2004. DMAA is an international team of over 40 architects, 3D engineers and other creatives.

Our latest projects are being realised in Europe, China, the Arab World and the US.

From the very beginning DMAA has focussed on how the investigation of requirements impacts upon the form of a building, our approach to technological development and what architecture can contribute to society.

Experience

Each person's experience of a place is highly individual. But these experiences are not independent of the space. Rather, they emerge reciprocally, like a pas de deux.

We intensify the spatial experience by carefully orchestrating the relationship

between routes, thresholds and spaces. These contain a range of experiential qualities that lend a place for atmosphere and character. They speed up or slow down movement, determine whether transitions between external and internal spaces flow or are marked by rigid contrasts, make us aware of such sensory spatial characteristics as narrowness and breadth.

APPROACH

Our modus operandi is based on four coordinates: Experience, Information, Technology and Society.

We understand a building as an active partner that can contribute as much to the physical experience of the individual as to social interaction and the emergence of the collective.

Information

Our architectural work begins with obvious questions: What are the requirements of a place? What is the current situation, what is its history, what should be possible there? In short, what does a place need in order to enhance the life of every participant? These and many other questions flow together into our project work. And in order to be able to answer them, we discuss openly within our team as well as with our clients and future users, our partners and external experts.



Clockwise from top left:
Elke Delugan-Meissl
(Founder), Roman
Delugan (Founder), Dietmar
Feistel (Partner), Martin
Josst (Partner)

For updates and details
on our current team,
awards and publications
please visit our website
at www.dmaa.at or follow
us on instagram.

The knowledge generated by this joint research shapes the design and develops it into a compact, forward-looking statement and the starting point for new questions.

Technology

Our own work is dependent upon the state of technological development of software and materials, of machinery and production methods, of building services and logistics, to name just some of the many technical aspects of the construction process.

The experience gained from every completed project opens up new horizons. That which recently seemed impossible is suddenly within our reach. We search for these challenges, shift boundaries of what is possible and energetically research together with our partners in order to discover new potential.

This is an approach in which technology and creativity go hand in hand. They interact productively. The appearance of a building is also always the reflection of a form that functions and that meets concrete needs in terms of experience, meaning and use.

ABOUT

Based in Vienna, founded 1993.
Employing 40-50 architects
and designers.
More than 100 projects
realised worldwide.

VALUES

Places for people.
Engaging, empowering.

Society

DMAA always addresses space in conjunction with people and with the world as it is today and how we would like it to be for our children. Our notion of space is very broad, it unites a wide range of perspectives (social, cultural, political, economical, functional, historical, aesthetical, etc.) into a concrete form. It is open for change and new ideas, it is never restricted by ideology.

Architecture creates the spatial preconditions for individual, physical experiences as well as for social interactions, generates high-quality atmospheres and surroundings, organises and structures our social life. Architecture is indispensable to society. How do we want to dwell, work, experience culture and live together in the future? The objective of our work is to generate spaces that provide sustainable answers to these questions.

CV	2003-2008	2007 – 2008	Grand Austrian State	2004 „Offices” [2nd price],
1993	Member of the Land	Teaching position at	Prize, Elke Delugan-Meissl,	2004
Delugan-Meissl ZT GmbH	Advisory Board Vienna	the Vienna University of	Roman Delugan, 2015	
was founded jointly by		Technology		House Ray1, Polydecor-
Elke Delugan-Meissl and	2006	Guest critic at the	Festival Hall Erl, Nominated	Corian Design Award [1st
Roman Delugan	Teaching position at the	Vienna University of	for the Mies van der Rohe	price], 2004
	University of Stuttgart	Technology	Price, 2015	
				House Ray1, Deutscher Um-
2004	2006	Martin Josst	Silver Medal of the City	baupreis [1st price], 2004
Expansion to Delugan	Prize of the City of Vienna		of Vienna, Elke Delugan-	
Meissl Associated	for Architecture	born in Hamburg,	Meissl, Roman Delugan,	House Ray1, Nominated
Architects		Germany	2015	for the Mies van der Rohe
PARTNER: Dietmar	2006-2010	Studied at Muthesius	Tendo, iF Design Award,	Award, 2003
Feistel, Martin Josst	Chairwoman of the	Academy of Art and	2015	
	Building and Urban Design	Design Kiel		Townhouse Wimbergergas-
2012	Assessment Committee	Practice at Studio	Festival Hall Erl, Auszeich-	se, Bauherrenpreis, 2002
Establishment of the	Salzburg	Morphosis, Los Angeles	nung des Landes Tirol für	
brand DMID, Delugan	2009-2011	since 2001	Neues Bauen, 2014	Townhouse Wimberger-
Meissl Industrial Design	Chairwoman of the BIG	Practice at Delugan		gasse, Building contractor
	Architecture Advisory	Meissl ZT GmbH	Festival Hall Erl, AIT-Award,	Award, 2002
	Board Vienna		2nd Prize in Category „Pu-	
Roman Delugan		since 2004	blic Buildings / Education“,	Publications (Selection)
	2010-2011	Partner at Delugan	2014	
born in Merano, Italy	Teaching position at the	Meissl Associated	Eye Film Institute Nether-	NON ENDLESS SPACE,
Studied at the	University of Applied Arts,	Architects	lands, Nominated for the	published Birkhäuser –
University of	Vienna		Mies van der Rohe Price,	Publishing for Architecture,
Applied Arts, Vienna		2006-2007	2013	Basel, 2023, ISBN 978-3-
[masterclass of	2014-2016	Teaching position at the	IYON LED spotlight range,	0356-2591-2
Professor Wilhelm	Member of the Architec-	University of Stuttgart	Design Plus Award, 2013	
Holzbauer]	tural			360°, published by De-
1984-1985	Advisory Board	2010-2011	IYON LED spotlight range,	lugan Meissl Associated
Research project	Regensburg	Teaching position at	Nominated for the Bundes-	Architects, Vienna, 2018,
«Architecture of	2015	the University of Applied	preis ecodesign, 2012	Order: communication@
the 20th century	Silver Medal of the City of	Arts, Vienna		dmaa.at
in Austria»,	Vienna		IYON LED spotlight range,	ZOOM, published by
directed by Professor	2015	Awards (Selection)	Good Design Award, 2012	Delugan Meissl Associated
Friedrich Achleitner	Grand Austrian State Prize			Architects, Vienna, 2018,
1996-1997		Taiyuan Botanical Garden	IYON LED spotlight range,	Order: communication@
Teaching position at	2016	Domes, Structural Awards	Design Plus Award, 2012	dmaa.at
the University of Applied	Commissioner of the	2021 Winner, The Institution	IYON LED spotlight range,	PLACES FOR PEOPLE,
Arts, Vienna	Austrian	of Structural Engineers,	reddot design award, 2012	published by Elke Delugan-
	Pavilion at the 15th	2021		Meissl, Commissioner of
2004-2005	International Architecture	Taiyuan Botanical Garden,	Brauerei Liesing, ECOLA-	the Austrian Pavillon, Sa-
Guest lecturer and guest	Biennale in Venice	Gold Medal for outstanding	Award, Honorable mention	bine Dreher and Christian
critic at the BFH Berner	since 2016	design, 2021	„New Buildings“, 2010	Muhr / Liquid Frontiers, Co-
Fachhochschule	Member of the Austrian	Residence Adele, Auszeich-	Porsche Museum, Nomi-	Curators, Vienna, 2016
2006	Art Senate	nung "gebaut 2020" der	nated for the Mies van der	
Prize of the City of Vienna	since 2017	Stadt Wien, 2020	Rohe Prize, 2009	VOL. 1, Delugan Meissl
for Architecture	Member of the Advisory	University Campus Krems,	Book „Porsche Museum“;	Associated Architects, pu-
	Board for Urban Planning	Auszeichnung für Enga-	Nomination to the Austrian	blished by Delugan Meissl
2007-2009	and Urban Design Vienna	gement im Klimaschutz,	State Prize „Most Beautiful	Associated Architects,
Guest lecturer and	since 2018	klimaaktiv Gold, 2019	Book 2009“, 2009	Vienna, 2010, ISBN 978-3-
guest critic at the	President of the Austrian	TEELA Zumtobel Office,	Porsche Museum, WALL-	9502979-0-4
MSA Münster School of	Frederick and Lillian Kiesler	reddot award 2019	PAPER* Award 2008 in	Porsche Museum De-
Architecture	Private Foundation		association with Jaguar [for	lugan Meissl Associated
	since 2021	TEELA Zumtobel Office, iF	Best Building Site], 2008	Architects HG Merz, pub-
2010	Member of the Advisory	Design Award 2019	HEWI Hardware Range	lished by Springer-Verlag,
Guest lecturer and	Board for Building Culture	MIBA FORUM LAAKIR-	120, Red Dot Design Award	Vienna, 2010, ISBN 978-
guest critic at the Georg	Graz	CHEN, 2nd Prize, 2A	2008, 2008	3-211-99738-3 (German),
Simon Ohms Hochschule		Europe Architecture Award	House Ray1, ARCHIP	ISBN 978-3-211-99736-9
Nuremberg	Dietmar Feistel	2018	Award, 2007	(English)
2015		MIBA Forum Laakirchen,	High-Rise Wienerberg,	Delugan Meissl Associated
Silver Medal of the City	born in Bregenz, Austria	Holzbaupreis Steiermark,	Prize for Architecture of the	Architects, Realized
of Vienna	Studied at the	1st Prize in Categorie „woo-	City of Vienna, 2006	projects, Current projects,
	Technical University in	den construction limitless“,	High-Rise Wienerberg,	Competitions, published
2015	Vienna	2017	International High-Rise	by Daab GmbH, Cologne,
Grand Austrian State	since 1998	Tourist Info Vienna, iF	Award [Honorable menti-	2006, ISBN 978-3-937718-
Prize	Practice at Delugan	Design Award, 2016	on], 2006	87-3
Member of international	Meissl ZT GmbH	Tendo, Good Design		Delugan Meissl Associated
architectural juries	since 2004	Award, 2016	Global Headquarters San-	Architects, inTENSE
	Partner at Delugan		doz, Contractworld Award	repose, published by Aedes
Elke Delugan-Meissl	Meissl Associated			Verlag, Berlin, 2006, ISBN
	Architects			3-937093-63-X
born in Linz, Austria				
Studied at the University				
Innsbruck; Practice in				
Innsbruck and Vienna				

Delugan Meissl
Associated Architects

Mittersteig 13/4
1040 Vienna, Austria

T: +43 (0) 1 585 36 90
office@dmaa.at

© DMAA, 06-2023

